

Chapter 12

TRENDS OVER TIME FOR ALL SITES, BREAST, CERVIX AND PROSTATE CANCERS

This chapter provides the graphical representation of number of new cancer cases registered from 1984 to 2014 in five Hospital Based Cancer Registries namely, TMH - Mumbai (till 2007), KMIO - Bangalore, CI (WIA) - Chennai, RCC - TVM and AMC - Dibrugarh.

Figure 12.1 represents the trend in total number of cancer cases registered (both sexes).

Figure 12.2 represents the trend in number of cancers associated with use of tobacco in males.

Figure 12.3 represents the trend in number of cancers associated with use of tobacco in females.

Figure 12.4 represents the trend in number of cancers associated with use of tobacco for both sexes.

Figure 12.5 shows the trend in number of patients received any surgical procedures among those who have been treated only at the reporting institute for all sites of cancer.

Figure 12.6 shows the trend in number of patients received any radiation among those who have been treated only at the reporting institute for all sites of cancer.

Figure 12.7 shows the trend in number of patients received any chemotherapy among those who have been treated only at the reporting institute for all sites of cancer.

Figure 12.8 shows the trend in number of breast cancer (ICD-10: C50) patients (females) registered.

Figure 12.9 shows the trend in number of cervix cancer (ICD-10: C53) patients registered.

Figure 12.10 shows the trend in number of prostate cancer (ICD-10: C61) patients registered.

Fig. 12.1: Trends in Total Number of Cancer Cases Registered (Both Sexes)

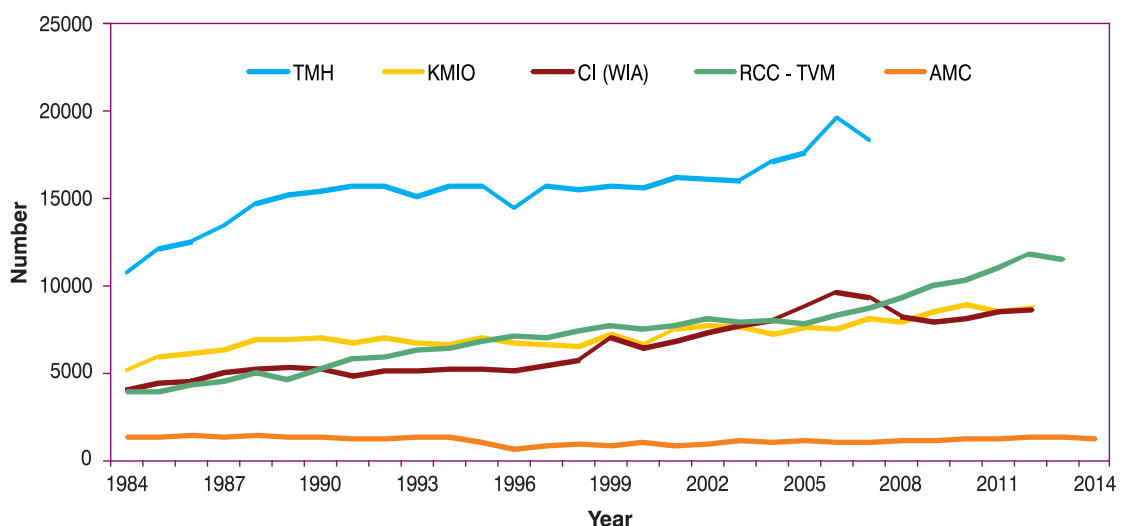


Fig. 12.2: Trends in Number of Cancers Associated with Use of Tobacco in Males

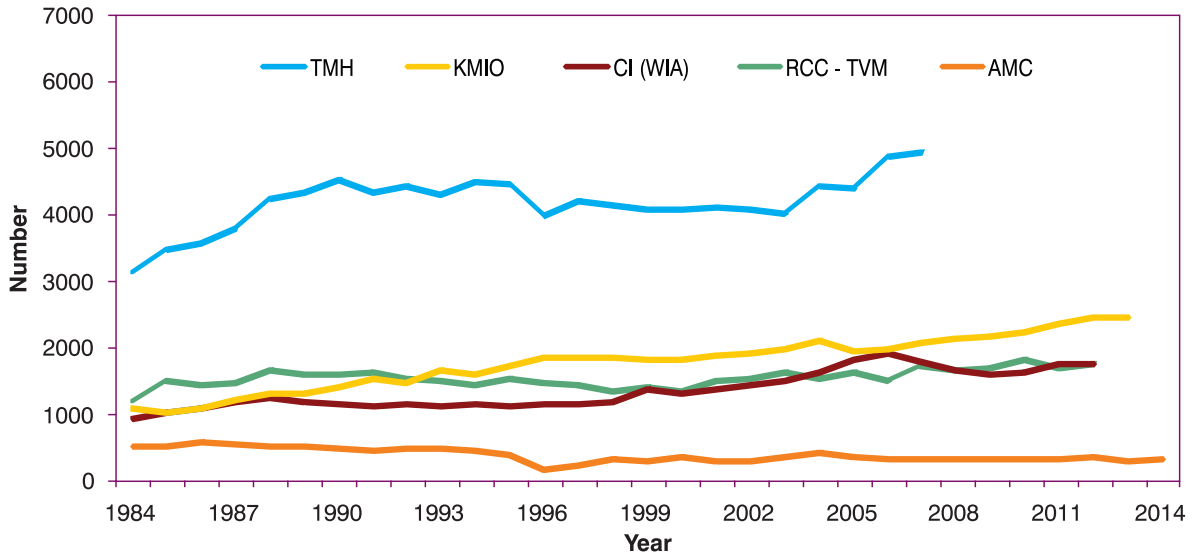


Fig. 12.3: Trends in Number of Cancers Associated with Use of Tobacco in Females

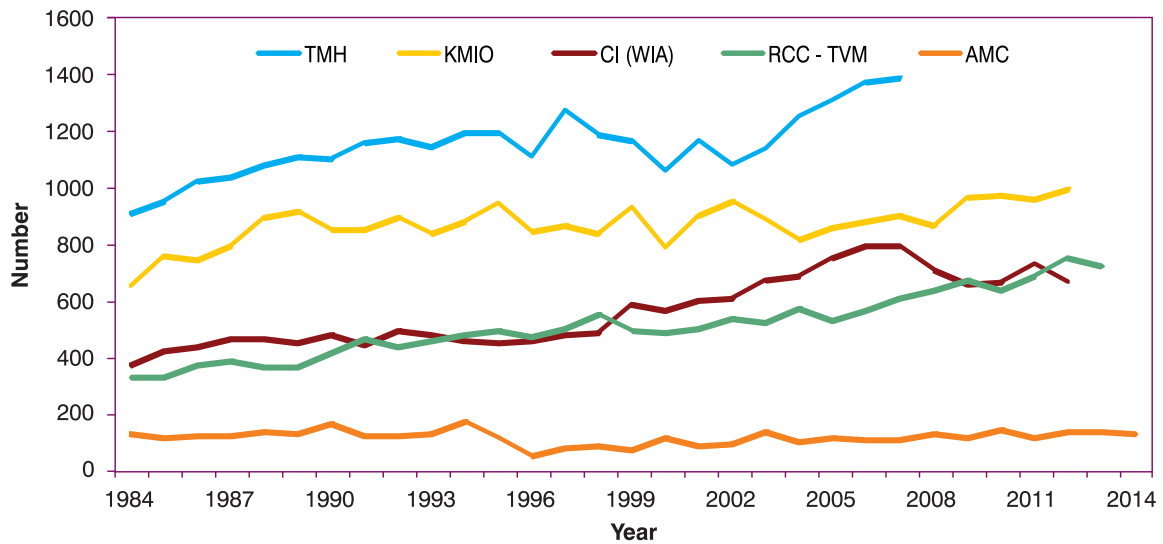


Fig. 12.4: Trends in Number of Cancers Associated with Use of Tobacco for Both Sexes

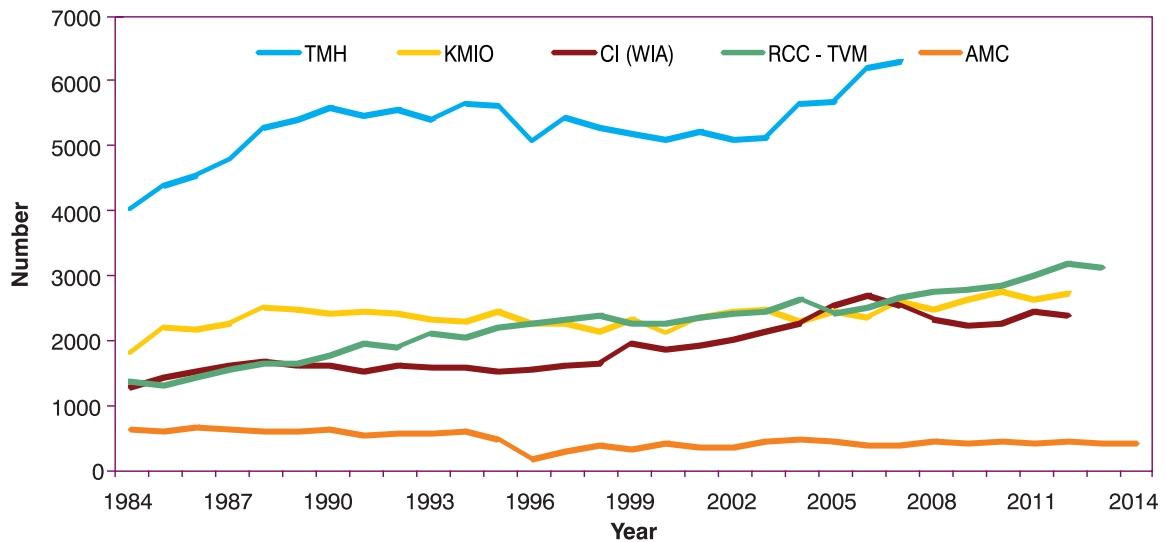


Fig. 12.5: Trends in Number of Patients Received Any Surgical Procedures for All Sites of Cancer

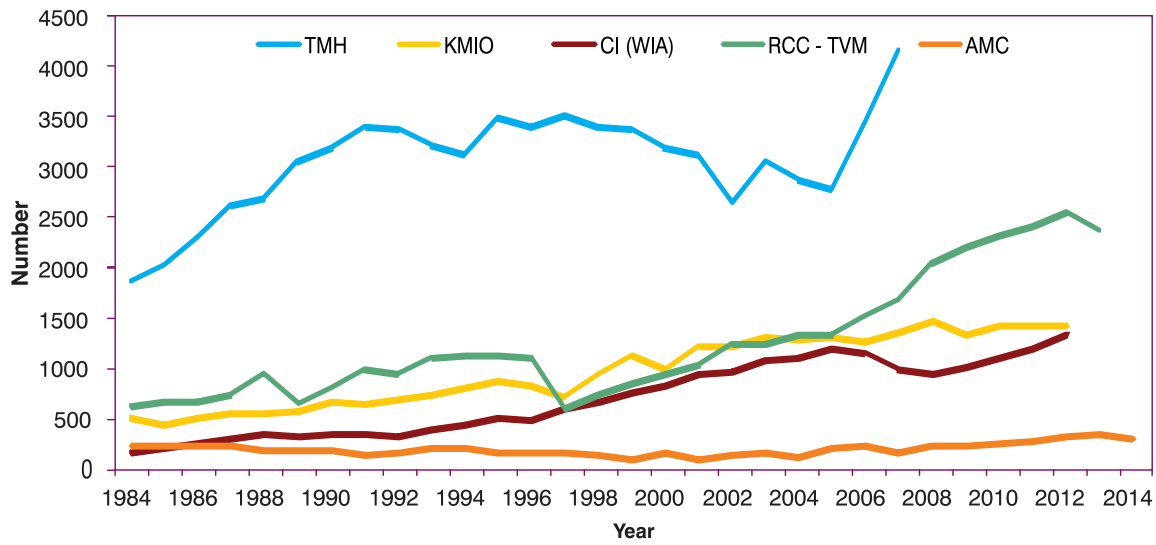


Fig. 12.6: Trends in Number of Patients Received Any Radiation for All Sites of Cancer

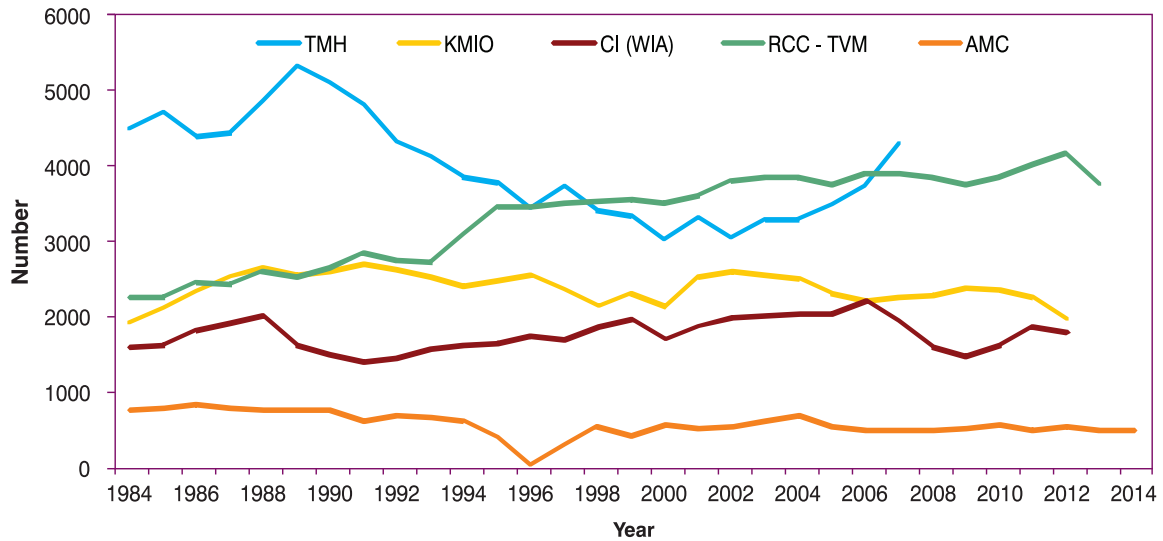


Fig. 12.7: Trends in Number of Patients Received Any Chemotherapy for All Sites of Cancer

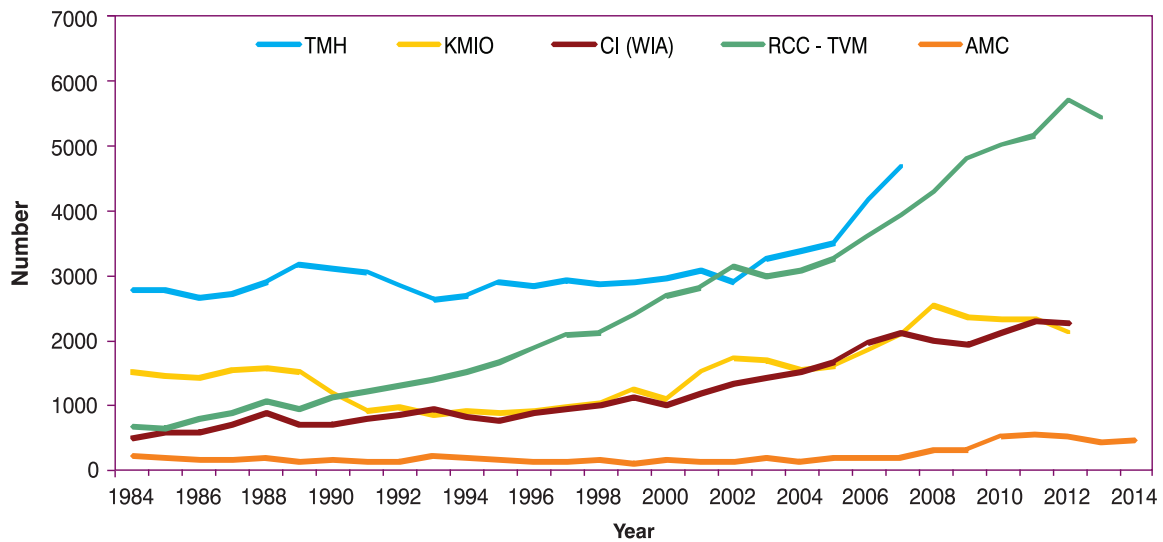


Fig. 12.8: Trends in Number of Breast Cancer (ICD-10: C50) Patients (Females) Registered

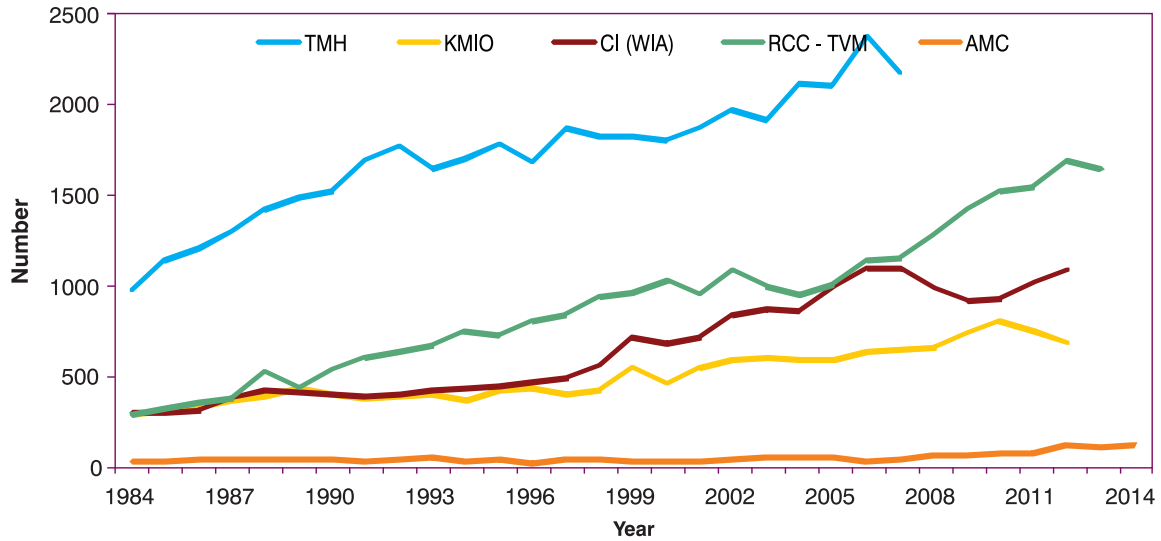


Fig. 12.9 Trends in Number of Cervix Cancer (ICD-10: C53) Patients Registered

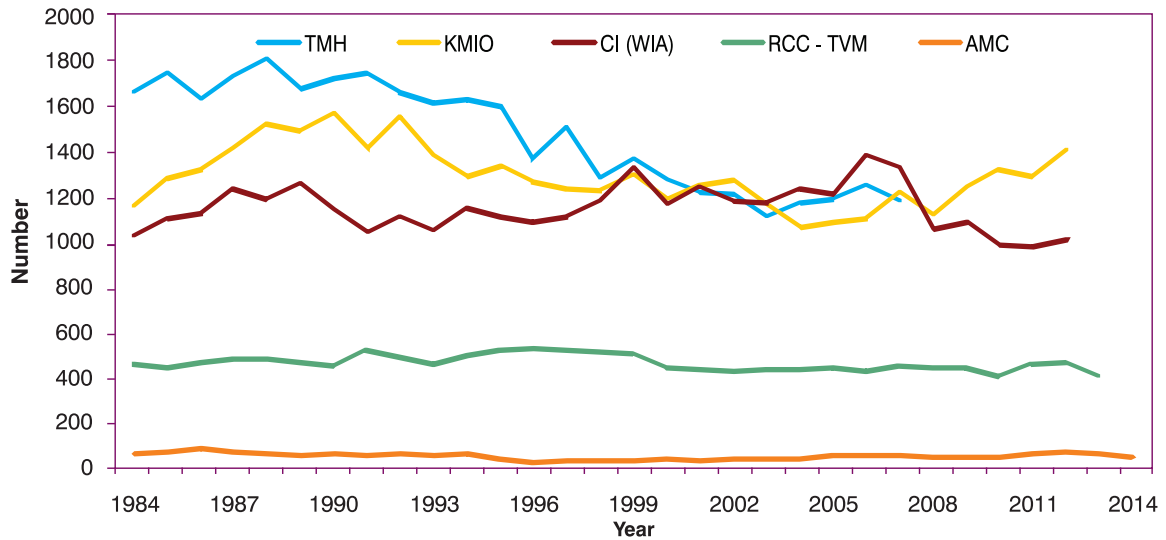


Fig. 12.10 Trends in Number of Prostate Cancer (ICD-10: C61) Patients Registered

